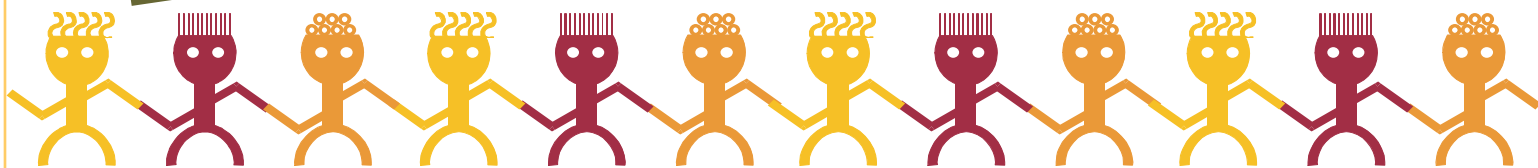




# CONGREGATION BETH JUDEA 2011-2012 PROGRAM GUIDE



הנה מה טוב ומה נעים שבת אחים גם יחד





# CONGREGATION BETH JUDEA

2011-2012 PROGRAM GUIDE

## MISSION STATEMENT

CONGREGATION BETH JUDEA IS AN ACCEPTING EGALITARIAN SYNAGOGUE WHOSE MISSION IS TO CREATE A WARM AND INVITING HOME THAT SERVES THE LIFELONG SPIRITUAL, EDUCATIONAL AND FELLOWSHIP NEEDS OF OUR MEMBERS. CONSISTENT WITH THE PRINCIPLES OF THE CONSERVATIVE/MASORTI MOVEMENT, WE EMBRACE OUR RESPONSIBILITY TO SERVE AND SUPPORT THE GREATER JEWISH COMMUNITY, THE COMMUNITY AT LARGE, AND THE STATE OF ISRAEL.

## VISION STATEMENT

CONGREGATION BETH JUDEA'S GOAL IS TO BE THE FOCAL POINT OF JEWISH LIFE IN OUR COMMUNITY BY:

- 1) PROVIDING ENGAGING LIFELONG LEARNING OPPORTUNITIES FOR ALL AGES AT ALL LEVELS.
- 2) NURTURING THE RELIGIOUS LIVES OF OUR MEMBERS BY MEETING THEIR INDIVIDUAL NEEDS.
- 3) ENABLING OUR MEMBERS TO EMBRACE THE RESPONSIBILITY OF MITZVOT.
- 4) INSPIRING MEMBERS TO ASSUME LEADERSHIP ROLES IN OUR SYNAGOGUE AND THE JEWISH COMMUNITY AT LARGE.



# TABLE OF CONTENTS



CALENDAR OF EVENTS	PAGE 6
MESSAGE FROM RABBI & PRESIDENT	PAGE 7
SOCIAL ACTION	PAGES 8–9
FOCUS ON FAMILIES	PAGE 10
YOUTH: USY, KADIMA & KADINKERS	PAGE 11
SISTERHOOD	PAGE 12
MEN’S CLUB	PAGE 13
KERUV	PAGE 14
MT NESTERS	PAGE 14
ADULT EDUCATION	PAGES 15–19
SPECIAL PROGRAMS	PAGE 15
WEEKLY CLASSES	PAGE 15
AJEC CLASSES	PAGE 16
EDUCATION SERIES	PAGE 16–19
SHABBAT SERVICES	PAGE 19

## CONGREGATION BETH JUDEA

- 5304 RFD, LONG GROVE, IL \*
- PH: 847-634-0777 \* FAX: 847-634-8055 \*

\* [WWW.BETHJUDEA.ORG](http://WWW.BETHJUDEA.ORG) \*



# CALENDAR OF EVENTS

SEPTEMBER 2011		
8	1:30 pm	Sisterhood Page Turners
12	7:45 pm	Sisterhood Mezuzah Making Social Program
13	8:00 pm	Men's Club Fitness Program
15	8:00 pm	Tap the Torah
22	6:30 pm	Challah Chaverim
OCTOBER 2011		
2	10:00 am	Sukkah Building
3	7:45 pm	Sisterhood Education Program
10	7:00 pm	Sisterhood Page Turners
12	12:30 pm	Sisterhood Game Day
16	12:00 pm	Lunch & Launch
16	6:00 pm	Men's Club Steak & Scotch
20	6:30 pm	Simchat Torah Flag Parade & Kindergarten Consecration
23	11:30 am	Kadima/Kadinkers Kick-Off Program
26	8:00 pm	The Great Debate Society
28	6:30 pm	New Member Shabbat Dinner Rabbi Pivo Installation
30	12:00 pm	Blessing Of The Animals: A Family Pet Event
NOVEMBER 2011		
6		MITZVAH DAY
7	8:00 pm	Tap the Torah
10	6:30 pm	Challah Chaverim
11	7:30 pm	Veteran's Day Shabbat
13	4:00 pm	Men's Club Poker Tournament
16	7:00 pm	Sisterhood Membership Dinner
30	8:00pm	The Great Debate Society
DECEMBER 2011		
9	7:30 pm	Hebrew Literacy Graduation Shabbat
11	9:00 am	Hanukkah Bazaar
12	7:45 pm	Sisterhood Program & Gift Exchange
15	8:00 pm	Tap the Torah
16	6:00 pm	Youth Dinner & Shabbat
18	9:00 am	Blood Drive
24	TBD	Family Fun Night & Chinese Dinner
JANUARY 2012		
6	5:45pm	Tot Shabbat Pray & Play (with Dinner)
15	1:00 pm	Raising a Jewish Child (Keruv Program)
18	7:00 pm	Sisterhood Page Turners
23	7:45 pm	Sisterhood Arts Program
25	8:00 pm	The Great Debate Society
28	9:30 am	Sisterhood Shabbat
28	6:30 pm	Magical Havdalah Evening

FEBRUARY 2012		
3	5:45 pm	Tot Shabbat Pray & Play (with Dinner)
5	8:30 am	World Wide Wrap
8	7:45 pm	Sisterhood Education Program
13	8:00 pm	Jews and the Civil War
15	8:00 pm	Hearing Men's Voices
23	6:30 pm	Challah Chaverim
25	7:45 pm	Sisterhood Progressive Nosh a Night
29	8:00 pm	The Great Debate Society
MARCH 2012		
4	10:00 am	Shushan Wonderland
4	11:00 am	PURIM CARNIVAL
7	7:00 pm	Purim Megillah Reading
14	8:00 pm	Hearing Men's Voices
18	3:00 pm	Passover Wine-Tasting
21	6:00 pm	Sisterhood Seder
APRIL 2012		
7		Second Seder @ Beth Judea (more details to follow)
15	1:00 pm	Raising a Jewish Child (Keruv Program)
18	7:00 pm	Yom HaShoah Commemoration @ Beth Am
19	8:00 pm	Tap the Torah
25	8:00 pm	The Great Debate Society
26	6:30 pm	Challah Chaverim
27	6:30 pm	Youth Shabbat Dinner & Service
30	7:00 pm	Sisterhood Page Turners
MAY 2012		
4	5:45 pm	Tot Shabbat Pray & Play (with Dinner)
7	7:45 pm	Sisterhood Program & Elections
11	6:00 pm	Shabbat Appreciation Dinner & Services
16	8:00 pm	Hearing Men's Voices
20	1:00 pm	Spontaneous Jewish Prayer (Keruv Program)
26	7:00 pm	Tikkun Leil
27	9:30 am	Confirmation as part of Shavuot Services
28	9:30 am	Adult B'nai Mitzvah as part of Shavuot Services
30	8:00 pm	The Great Debate Society
31	8:00 pm	Annual Meeting
<i>1st &amp; 3rd Shabbat of the month</i>		Interpretive Shabbat Service (meets in Upstairs Conference Room)
<i>2nd Sun. of the month</i>		Gan Shalom (10:30 am)
<i>3rd Thur. of the month</i>		Challah Chaverim (2:00 pm)
<i>2nd Sun. of the month</i>		Java Café (10:00 am)
<i>1st Friday of the month</i>		Tot Shabbat (6:30 pm)
<i>2nd Thurs of the month</i>		Rosh Hodesh Group (8:00 pm)
<i>4th Sat. of each month</i>		Bowling League (7:30 pm)

# A MESSAGE FROM THE RABBI & SYNAGOGUE PRESIDENT

Dear Congregants,

The synagogue has been at the center of Jewish life for two thousand years. Its two main functions are to serve as *beit keneset*, a meeting place for prayer, and *beit midrash*, a meeting place for study. In the pages of this booklet you will find that in addition to fulfilling our obligation to be a place of prayer, Beth Judea has a tremendous amount to offer as a *beit midrash*. There is truly something for everyone here, from tots to our elders, on weekdays and weekends, and on every conceivable topic (but if you think of one that is not here, let us know!)

The former Chancellor of the Jewish Theological Seminary, Rabbi Louis Finkelstein, once memorably said "When I pray, I speak to God; when I study, God speaks to me." We hear God's voice emerge from classical Jewish texts, from modern commentaries on them and from our discussions of both. I invite our members to engage in the sacred process of study in order to learn, to do and meet one another.

I look forward to seeing you in class and in shul!

**Rabbi Jeff Pivo**

---

Dear Congregants,

Please enjoy reading the Beth Judea 2011-2012 Program Guide. Thank you to Anna Besser, our Education Director, for coordinating this guide.

As you read through the many activities and events that our congregation has to offer, please try to get more involved in the synagogue and take advantage of attending these programs. This guide does not even include everything that we have planned for you, but certainly provides you with an excellent summary of all of Congregation Beth Judea's programs planned to date. I would encourage you to further follow-up with the updates of our programs on our congregation's website: [www.bethjudea.org](http://www.bethjudea.org). and in our weekly e-mail blast, "News from Beth Judea."

Our theme this year is the Beth Judea family, and I urge you to get more active in our family by attending our programs and events, including youth activities; Men's Club; Sisterhood; Adult Education; MT Nesters; Focus on Families for programs with young children; Chavurah groups; Keruv; and of course our warm and inviting Shabbat, holiday and daily minyan services.

I also encourage you to help plan the programs that interest you by joining one of our many committees. When you go on the website, click on "Beth Judea Community," and then click on "Committees" for a list and description of all our committees.

Also, if you know any families who are looking to join our Beth Judea family, please let us know. May we go from strength to strength.

**Rick Drazner**

CBJ President

# SOCIAL ACTION

For more information, contact Marilyn Green-Rebnord  
at 847-821-7740.

*The Social Action Committee generally meets the first Tuesday of each month at 8:00 p.m. at the synagogue. New members are always welcome. Please check with the synagogue office to confirm the next meeting date.*

The Social Action committee of Beth Judea is involved in a variety of programs that run over the course of the year. Many are "action based" where congregants participate directly in various tikkun olam projects; other programs revolve around collections for various welfare agencies in the community. The following are a sample of the many programs in which we engage; help is always needed and appreciated.

## Mitzvah Days

Social Action sponsors two Mitzvah Day programs at the synagogue—one a "Mini-Mitzvah Day," which was held August 22, 2011 where we collected school supplies and packed book bags for needy children who receive services through Jewish Child & Family Services.

Our main Mitzvah Day will be on **November 6, 2011**, where all congregants, young and old, participate in mitzvah activities at the synagogue and in the surrounding community.



## Veteran's Day Shabbat

Join us on Friday, **November 11, 2011**, as we hold a special Shabbat service to honor those who have served our country. Please let us know if you or a member of your family would like to be recognized at this special Shabbat service.

## 7+1

Several weeks before Chanukah, Congregation Beth Judea participates in the 7+1 Wish List project as well as the general 7+1 campaign, both sponsored by Jewish Children's Bureau. 7+1 stands for seven days of Chanukah and one for a needy child. In addition to numerous gifts collected to be distributed to clients of the Jewish Children's Bureau, over 60 children's specific wishes for Chanukah gifts are met, by congregants purchasing the gifts desired by these children.

# SOCIAL ACTION *(continued)*

## Ark Family/The Ark

The Ark is a not-for-profit facility for needy Chicago-area Jews. Many of the recipients are elderly or immigrants who receive social services such as food, shelter, or medical assistance that they are unable to get anywhere else.

Social Action supports a family through The Ark by providing groceries on a monthly basis. Participants in the program can either shop for or deliver groceries or contribute monetarily. Help is always needed, particularly for shopping and delivering of groceries.

On an annual basis, non-perishable kosher food is collected for the Ark's Food Pantry. Volunteers from the congregation deliver the food to the Ark in Chicago.



## Council for the Jewish Elderly Luncheon



Congregation Beth Judea annually sponsors a Shabbat lunch for approximately 50 seniors through the Council for the Jewish Elderly. In addition to financially sponsoring this event, volunteers from our congregation visit with the seniors and serve them lunch. Our clergy also attend the event: the Hazzan provides entertainment, and the Rabbi provides a D'var Torah. Throughout the years, our USYers have participated by making centerpieces for the luncheon.

## PADS

For over ten years, Congregation Beth Judea has supported PADS (Public Action to Deliver Shelter) by shopping, cooking, and serving meals at a homeless shelter in the local community one or two nights a month. This program has been on hiatus for Social Action in the past year. This year, Sisterhood and Social Action will be resuming the program in some form.



## Yad L'Yad

Congregation Beth Judea is participating for the 11th year in the Yad L'Yad program, organized by Chicago Action for Jews in the Former Soviet Union, matching synagogues with small Jewish communities in the FSU. Congregation Beth Judea has assisted Yekaterinburg, a community of 10,000 Jews in the Ural Mountains, both through Judaic and financial support. We have helped them to establish a one-week summer camp for their youth, provided prayer books, Judaic ritual items, funds to obtain matzah for Passover, and financial assistance so that they are able to celebrate Shabbat, holidays, and festivals. On a monthly basis we speak with their community leader to learn of the needs of their community and to monitor anti-semitism. A group of our religious school students annually speak to children in their community during our Mitzvah Day to bring our communities closer despite the geographic distance that separates us.



# FOCUS ON FAMILIES EVENT CALENDAR

Congregation Beth Judea's *Focus on Families* is dedicated to enriching families' connections to Judaism and our Jewish community through services and programs specifically designed for children infant through 2<sup>nd</sup> grade. *Focus on Families* programs captivate young children's interest in the joys and excitement of Judaism and Jewish holiday celebration.

**For more Focus on Families programming information, contact MINDY GOLD at [mindygold@sbcglobal.net](mailto:mindygold@sbcglobal.net).**

Focus on Families Programs for 2011 - 2012	
Date, Time*	Holiday / Event
Monday, August 22	Mini-mitzvah Evening & Ice Cream Social
Friday, Aug. 26 5:45 pm	Shabbat Under the Stars
Sun., Oct. 16 12 pm – 2:00 pm	Lunch & Launch: a Sukkot Kite Flying Event
Thursday, Oct. 20 6:30 pm	Simchat Torah Celebration & Parade
Sunday, Oct. 30 12 noon	Blessing of the Animals: A Family Pet Event
Sun., Nov. 6 11:00 am	Mitzvah Day
Sat. Dec. 24	Family Fun Night & Chinese Dinner
Friday, January 6 5:45 pm	Tot Shabbat Pray and Play
Sat., January 28 6:30 pm	Magical Havdalah Evening
Friday, Feb. 3 5:45 pm	Tot Shabbat Pray and Play
Sun., Mar. 4 10:00 am	Shushan Wonderland & Purim Carnival Tot Hour
Wed., March 7	Family Megillah Reading
Sat., Apr. 14	Post-Passover Pizza Night
Friday, May 4 5:45 pm	Tot Shabbat Pray and Play
Sunday, May 6 12 noon – 2:00 pm	Family Lag B'Omer Picnic
<b>2<sup>nd</sup> Sun. of the month, Sept.-May</b> 10:30 am – 12 noon	<b>Gan Shalom (PreK and under)</b>
<b>3<sup>rd</sup> Thurs. of the month, Sept. – May</b> 2:00 – 2:45 pm	<b>Challah Chaverim</b>

We are proud to offer:

**Family and Tot High Holiday Services:** More information can be found on the Beth Judea High Holiday Schedule

**Gan Shabbat:** Saturday Morning Family Shabbat Service geared towards children ages 9 and under and their families

**Every Shabbat Saturday Morning, 10:30 am**

**Tot Shabbat:** Friday Evening Shabbat Service geared towards children ages 6 and under and their families

**1<sup>st</sup> Friday of the month, 6:30 pm**

**Tot Shabbat Pray and Play:** This extended Tot Shabbat experience includes dinner, Parsha Playtime, and Tot Shabbat service.

**Gan Shalom:** Gan Shalom is a monthly pre-Kindergarten program focusing on Jewish holidays, heroes, and mitzvot for children 5 years old and under accompanied by an adult. **2<sup>nd</sup> Sunday of the month,**

**Sept. – May, 10:30 am – 12:00 noon**

*(Occasional 3<sup>rd</sup> Sundays due to Holidays, check schedule on website for details)*

**Challah Chaverim:** Monthly parent-child activity for toddlers through Kindergarteners that includes challah baking, story time, and a Shabbat song session

**3<sup>rd</sup> Thursday of the month, Sept. – May,**

**2:00 pm – 2:45 pm;**

**Sept. 22, Nov. 10, Feb. 23 at 6:30 pm**

# YOUTH EVENTS

## USY, KADIMA & KADINKERS

For more Youth programming information, contact **MARC SENDER** at 847-634-0777 or at [youthdirector@bethjudea.org](mailto:youthdirector@bethjudea.org).



### USY

Beth Judea is committed to a strong youth program. Leading the pack is the award winning chapter for high school aged kids known as BJUSY. Members of BJUSY, which stands for Beth Judea USY, (United Synagogue Youth) meet every Tuesday night for a wide array of social and religious programs. BJUSY continues to integrate religion and Israel into a variety of award winning programs to ensure strong Jewish values among its members. BJUSY gives Jewish high school aged youth a chance to connect to other Jewish teens outside of a typical high school environment.

Our USYers also participate in a number of regional and international programs such as Camp USY XL, International Convention, Regional Conventions, as well as summer trips to Israel and various locations across the United States.

Please visit our website for weekly updates and a full calendar of events. [www.bjusy.webs.com](http://www.bjusy.webs.com)



### UPCOMING PROGRAMS:

**OCTOBER:**  
 2—Help Build the Sukkah  
 4—Murder Mystery  
 8—Yom Kippur Youth Services  
 11—Gladiators @ Pump It Up (ends at 10pm)  
 18—BJUSY Sukkah "Hop"  
 25—Double Dare  
 31—BJUSY Trick or Canning (During trick or treat hours)

**NOVEMBER:**  
 1—Pre K Night!  
 8—BJUSY Whirly Ball (ends at 10pm)  
 11-13 CHUSYFEST (Regional)  
 15—UnBirthday Party  
 22—No BJUSY  
 23—Regional Turkey Dance at Beth El  
 29—Muffins and Magic

**DECEMBER:**  
 3—BJUSY vs. Wheelchair bulls charity basketball game  
 6—Gender Bonding  
 13—Chanukah Party  
 20—Broomball  
 24-29 International USY Convention in Philadelphia

### KADIMA

Our KADIMA program is open to 6<sup>th</sup>, 7<sup>th</sup>, and 8<sup>th</sup> graders. The group meets on a monthly basis, usually on Sundays for a variety of different programming. Most of the programs are of a social nature and include trips to laser tag, waterparks, and even entire day off programs. There are also occasionally events held at the synagogue in the newly remodeled youth lounge complete with a big screen TV, PlayStation 3, and much more. Under the direction of Youth Director, Marc Sender, each program is planned by the BJUSY Executive Board (high school aged kids), which gives the Kadimaniks a chance to intermix with the high school kids. Kadima age kids are also eligible to participate in regional events that occur throughout the year.

### UPCOMING PROGRAMS:

October 9—Laser Tag (12noon-3pm)  
 November 20—Joint Hebrew School Scavenger Hunt (11am-1pm)  
 December 8—Mega Magnificent Menorah Making Lounge Night (6pm-8pm)  
 December 9-11 Regional Kadima Konvention

### KADINKERS

The Kadinkers program is open to 3<sup>rd</sup>, 4<sup>th</sup>, and 5<sup>th</sup> graders. Activities are planned throughout the year to give the younger children a taste of what KADIMA and USY will be like in the future. Events for this group also occur on a monthly basis and are usually held on Sundays immediately following Hebrew School. These programs are also planned by the BJUSY Executive Board while being fully staffed by the Youth Director and youth advisors to make sure of proper supervision. Events include trips to the zoo, artist at heart, and even Build a Bear.

### UPCOMING PROGRAMS:

October 23—Artist @ Heart (12noon-3pm)  
 November 20—Joint Hebrew School Scavenger Hunt (11am-1pm)  
 December 8—Mega Magnificent Menorah Making Lounge Night



# CONGREGATION BETH JUDEA

## SISTERHOOD EVENTS

### MISSION STATEMENT

Congregation Beth Judea Sisterhood strives to foster and further the highest ideals of Conservative Judaism, as expressed by the Synagogue, serving as a center of religious, charitable, educational and social activities for the women of the Synagogue.

**For more Sisterhood information, contact Debbie Green at 847-634-2890 or Mary Brickman at 847-566-2617.**

### SEPTEMBER 2011



- 8 Afternoon Page Turners (Book Club)
- 12 Mezuzah Making Social Program

### FEBRUARY 2012

- 8 Education Program
- 25 Progressive Nosh a Night

### OCTOBER 2011

- 3 Education Program
- 10 Page Turners (Book Club)  
*The Girl from Foreign: A Memoir*

### MARCH 2012

- 1 Purim Event
- 18 Wine Tasting with Men's Club
- 21 Passover Event



### NOVEMBER 2011

- 16 Membership Event

### APRIL 2012

- 30 Page Turners

### DECEMBER 2011



- 11 Hanukah Bazaar
- 12 Hanukah program – Gift Exchange

### MAY 2012

- 7 Elections and Program

### JANUARY 2012

- 18 Page Turners
- 23 Arts Program
- 28 Sisterhood Shabbat

### JUNE 2012

- 11 Installation Dinner



### PAGE TURNERS

#### SISTERHOOD BOOK CLUB

Join Sisterhood for evenings of lively discussion and conversation. Information about location and books will be announced via email and in the WORD.

# **MEN'S**

## **HAPPENINGS**

For more Men's Club information, contact Fred Rabinowitz  
at 847-398-5488 or at rabino49@aol.com.

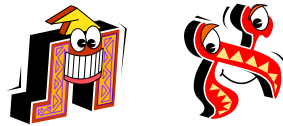
### HEBREW LITERACY I

SEPT. 20– DEC. 6

TUESDAYS AT 8 PM

A 12 week class designed to teach those with little or no experience how to read Hebrew. The course focuses on the Friday night service. Students graduate at Friday Night Shabbat Services on December 9, 2011. at 7:30 pm

*\$30 FEE FOR SHALOM  
ALEICHEM TEXTBOOK*



### HEBREW LITERACY II

FEB. 7– MARCH 27

TUESDAYS AT 8 PM

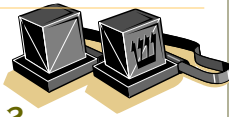
For those of you who have taken Hebrew Literacy and want to continue learning, then this opportunity is for you! This 8-week class will focus on teaching the prayers from the Saturday morning service while incorporating parts of the Understanding Prayer curriculum at the same time.

### WORLD WIDE WRAP

SUNDAY, FEBRUARY 5, 2012

8:30 AM

Learn the tradition, history, and symbolism of wearing tefillin. Men's Club members will be on hand to assist in putting tefillin on. We will then join the congregation in the lay-led Sunday Morning Minyan.



### PASSOVER WINE TASTING

SUNDAY, MARCH 18, 2012 AT 3 PM

Joint Men's Club and Sisterhood program. Taste various Passover Kosher wines and see which one will make it to your Seder Table this year.



### CALENDAR OF EVENTS

Sept. 13—Fitness Program @ 8 pm

Oct. 2—Sukkah Building (after minyan)

Oct. 16—Steak & Scotch

Nov. 13— Texas Hold 'Em Poker Tournament

Nov. 27—Blood Drive

Dec. 9—Hebrew Literacy Graduation

(part of Shabbat Services)

Feb. 5—World Wide Wrap at 8:30 am

Feb. 15—Hearing Men's Voices at 8 pm

March 14—Hearing Men's Voices at 8 pm

March 18—Sisterhood/Men's Club

Passover Wine Tasting

May 13—Lox Box Delivery & Pick Ups

May 16—Hearing Men's Voices at 8 pm

### JAVA CAFE

2ND SUNDAY OF EACH  
MONTH

Join Men's Club after Minyan for  
this Java Café.



### MEN'S CLUB SHABBAT

Men's Club members join in and participate in the Shabbat service. The Men's Club Shabbat service is always filled with *RUACH!*

# KERUV

For more Keruv programming information, contact Mark Travis at [marktravis27@yahoo.com](mailto:marktravis27@yahoo.com).

## **Raising A Jewish Child: No Experience Necessary**

*Rabbi Moffic and Karen Kushner*

In this session, parents will gain literacy across several main areas of Jewish life from Shabbat and Holidays to God and Ethical Living. A special focus on how interfaith families can make decisions about how to bring religion and traditions into their homes in meaningful and authentic ways will be discussed in detail.

**Part I: Shabbat and Holidays: Jan. 15, 2012; 1:00 to 3:00PM**

**Part II: Spirituality and Ethical Living: April 15, 2012 ; 1:00 to 3:00 PM**

*You can attend one or both of these sessions.*

## **Spontaneous Jewish Prayer: Amen, Hallelujah, Praise God**

*Rabbi Moffic and Karen Kushner*

This two hour class will allow participants to discuss what Jewish prayer is and how prayer "works." We will share examples of both private and spontaneous prayer within the Jewish tradition. There will be time for interfaith learners to discuss their own backgrounds with prayer, the hurdle or Hebrew, and how to find meaning in synagogue worship.

**May 20, 2012; 1:00 to 3:00 PM**

*Rabbi Ari Poster Moffic is the Director of InterfaithFamily/Chicago. She was ordained at Hebrew Union College-Jewish Institute of Religion in 2007. A graduate of Indiana University, she received Master's Degrees in Jewish Education and Jewish Studies from Baltimore Hebrew University. A native of Newton Massachusetts, Rabbi Moffic has an extensive background in Jewish family education- including writing for a Jewish family magazine, leading family retreats, and helping to start a family centered religious school. She has a special interest in working with interfaith couples and families. Identity formation, modern interpretations of culture and religion and making Jewish living accessible, relevant and meaningful are the areas that drive and inspire Rabbi Moffic. She believes in learning through doing and engaging the entire family in transformative Jewish experiences. She is married to Rabbi Evan Moffic, senior rabbi at Congregation Solel in Highland Park, Illinois.*



## MT NESTERS

**For programming information, contact the Synagogue Office at 847-634-0777.**

The MT Nesters is a group comprised of seniors, the majority of which are members of Congregation Beth Judea. The group meets at the synagogue once a month and continues to celebrate many years of coordinating activities for seniors in our community.

Activities are normally planned for the Second Sunday of each month and may include a Chanukah Party, an Evening with the Clergy, taking in a Theatre play, a visit to a museum, having a picnic during the summer, a night at Ravinia, hosting professional entertainment, having a Educational/Cultural program, and sometimes just an informal get together for coffee. Current annual dues are free for the first year and then only \$15.00 per year per person. Call the synagogue office at 847-634-0777 for more information.

# CONGREGATION BETH JUDEA ADULT EDUCATION

For more information about the Adult Education programs, contact Anna Besser at 847-634-0777 or at [abesser@bethjudea.org](mailto:abesser@bethjudea.org).

All programs and classes are free of charge unless specifically noted.

## SPECIAL PROGRAMS

### Yom Hashoah Commemoration

Join us at the annual community commemoration that will take place at Temple Beth Am.  
Wednesday, April 18, 2012,  
7 pm



### Israel Solidarity Walk

Join the Northwest community in celebrating Israel for the annual Israel Solidarity Walk.  
Date and Time still to be determined



### Tikkun Leil Shavuot

Celebrate the giving of the Torah with an evening of Jewish learning.  
Refreshments will be provided.  
Saturday, May 26, 2012  
7 pm Tikkun Leil

## WEEKLY CLASSES

*These classes are ongoing. Please join at any time.*

*Hebrew is not required for any of these classes,  
unless specifically noted.*

### Words of My Mouth: Talmud Study

*Sunday mornings at 8 am*

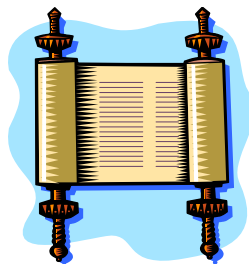
The Talmud is a profoundly rich compilation of wisdom that has continued relevance to our contemporary search for meaning. This weekly class provides an examination of current understanding of Jewish law, secular law, sociology, mythology, or agadah, and often dwells on questions incorporating current events. Orin Rotman will facilitate this weekly Talmud study session.

(Artsroll Schottenstein edition is used for the class)

### Sweet Taste of Torah

*Wednesday evenings at 8 pm*

For thousands of years Judaism has been interpreting and applying the Torah to everyday life. This class follows the Tanach cycle. Each week we will read through several chapters a week of the *Nevim* (Prophets) texts, then on to *Ketuvim* (Writings), then back to Torah again.



### Shabbat Torah/Haftarah Study

*Shabbat morning at 9 am*

Weekly study to discuss the parsha of the week. We will discuss questions raised by the participants.

### Interpretive Shabbat Service

*Shabbat morning at 10:30 am every 1st & 3rd Shabbat of the month*

Norm Kurtz facilitates this Shabbat morning service that focuses on examining the structure of the prayer service, learning the major prayers and becoming more comfortable with the choreography and customs of the Shabbat morning service.

# EDUCATION SERIES

## AJEC

ADULT JEWISH EDUCATION CO-OP  
OF THE NORTHWEST SUBURBS

For more information, please contact Sue Hershinow at 847-537-9169

### **ISRAEL, THE U.S., PALESTINE AND THE U.N. – WHAT DOES THE FUTURE HOLD?**

What does the future hold for Israel and U.S. relations? Israeli public opinion and Fatah/Hamas ties? Join Carl Schrag, a Middle East Analyst and Journalist, as he discusses this topic with us.



**September 18, 2011, 7:00 pm**

Location: *Congregation Beth Judea*

### **AN INTRODUCTION TO THE STUDY OF GENESIS AND TORAH**



Come join us for a 5-part study session to learn and discuss how the key ideas of the Torah have shaped our understanding of Judaism today. Jane Shapiro, a noted Jewish educator, will facilitate the classes.

**Nov. 1, 8, 22, 29 & Dec. 6**

**12:00 pm–1:30 pm** (*bring your lunch and enjoy this informal and lively learning opportunity*)

Location: *Temple Chai*



### **WHO'S GOT THE POWER? EMPOWERING MODERN JEWISH WOMEN WITH ANCIENT WISDOM**

Come join us for a 3-session learning opportunity, from 10:00 until 11:30 am, on the following dates at Congregation Or Shalom:

#### **Oct. 26: From Yente to Yenta: How a name became a noun**

Jan Huttner – creator of Tzivos Spotlight, an Arts and Culture column that appears in Chicago's JUF News



*Fiddler on the Roof* premiered on Broadway in 1964, and almost 50 years later it's still being performed by schools kids and professional companies all around the world. In this presentation we're going to focus on one character: "Yente the Matchmaker." Who is Yente? How has she been portrayed over the years? Why should YOU care?

#### **November 2 – THE SINAI DESERT EXPERIENCE**

Yehudis Karbal, M.A., L.C.P.C., Educator and Therapist

Come and explore the world of Torah psychology. 40 years of "wanderings" - 42 encampments along the way; Their meaning and inspiration for our present day "journeys" from personal bondage (Egypt) to ultimate liberation (Israel).



#### **November 9 – Empowering Women for Healthy Relationships: a Jewish Perspective**

Bobbie Gordon, LCSW, Director of Community Education at SHALVA

*Every day the media bombards us with all kinds of relationships, desperate housewives, bachelorettes, modern families, the list goes on and on. But isn't the underlying question we are asking, "What makes a relationship work or not work?"*

Location: *Congregation Or Shalom*  
(for all 3 sessions)

# EDUCATION SERIES

To register for classes or to find out more information about the Adult Education programs, contact Anna Besser at 847-634-0777 or at [abesser@bethjudea.org](mailto:abesser@bethjudea.org).



## BROWN BAG

### LUNCH & LEARN

*Rabbi Pivo*

*Mondays at 12 pm—1:15 pm*

Join us at for this 6 week series taught by Rabbi Pivo. We will focus on interpreting Talmudic law on torts, employment, loans, etc. You bring the theme and we will see how Talmud applies to it!

**\*\* Bring your own lunch \*\***  
*Location to be determined*

**Dates: Nov. 7, 14, 21, 28, Dec. 5 & 12**

### Ethical Eating: You Are How You Eat

*Rabbi Pivo & Debbie Frager*

*Tuesday evenings at 8 pm*

From vegetarians to locavores, our attitudes toward eating are shaped by, and reflect, our relationship to the natural world. In this course we will discuss the moral imperatives that shape a distinctively Jewish approach to food, and we will cook and eat foods that reflect that approach.

**Dates: Nov. 1, 8, 15, 29, Dec. 6 & 13**

ethical  
eating



### Six Jewish Approaches to God

*Rabbi Pivo*

*Mondays at 12:30 pm*



Examining three pre-modern and three modern Jewish theologies, we will explore the ever changing Jewish relationship with the divine. Sessions include: God in the Torah, God in the Talmud, Rambam's God, Buber's God, Kaplan's God, Heschel's God.

**Dates: Jan. 10, 17, 24, 31, Feb. 7, 14**

### Just Desserts—Jewish Style

*Debbie Frager*

*Tuesday evenings at 8 pm*

Who doesn't love desserts? Each week we will focus a different PARVE Jewish dessert to create—ones that don't taste like Parve! Join us for this fun filled class and learn to make some amazing desserts!



**Dates: Jan. 10, 17, 24, 31, Feb. 7, & 14**

### Tax or Spend: Judaism and the Welfare State

*Rabbi Pivo*

*Sundays at 11 am*

To what degree is society responsible for the well-being of its citizens? What should the individual contribute toward the upkeep of public institutions and the support of strangers? Looking ahead to the 2012 election cycle, this class will examine Jewish sources that inform our thinking on these and related topics.

**Dates: Jan. 15, 22, 29 Feb. 5, 12 & 26**

CONGREGATION  
BETH JUDEA  
ADULT EDUCATION  
EDUCATION SERIES (continued)

You Can Leave Your Hat On: Sexual Ethics  
in Jewish Tradition

*Rabbi Pivo*

*Tuesday evenings at 8 pm*

What are our responsibilities to each other in the bedroom? This course will delve into biblical and rabbinic teachings about what our sexual practices say about respect, dominance, procreation and pleasure in the sexual realm.



**Dates: March 6, 13, 20, Apr. 3, 10, 17**

Adult B'nai Mitzvah



The 2nd year of the Adult B'nai Mitzvah will begin shortly. This year, you will meet with Rabbi Pivo and Haz-zan Weisberg for a year-long Synagogue Skills class that will prepare you for your B'nai

Mitzvah. This class will meet regularly beginning in Oct and ending with your B'nai Mitzvah in May.

The Adult B'nai Mitzvah will be held during Sha-vuot of 2012, MONDAY, MAY 28, 2012 (Memorial Day).

**Class will meet on Monday evenings at 8 pm beginning on Monday, Oct. 31st.** Please contact Anna Besser for additional information.

TAP the Torah

*Every other month; Third Thursday evening each month at 8 pm*

Join us on Thursday nights at 8pm for a lively Torah study while we down some beer! Our study sessions will be held Beth Judea.



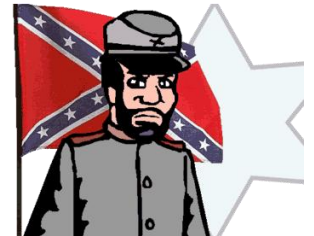
**Dates:  
November 7, 2011  
December 15, 2011  
April 19, 2012**

Jews and the Civil War

*Marc Herwitz*

Did you know that Jews fought on both sides of the Civil War?

This year celebrates the 150th anniversary of the war. While the Jews were small in number, they played a significant role in politics and battle. Join us for a presentation by Marc Herwitz, a healthcare administrator at the Captain James A. Lovell Federal Health Care Center in North Chicago.



**Monday, February 13, 2012  
8:00 pm**



Rosh Chodesh Group

Rosh Chodesh is a women's holiday, traditionally celebrated at the new moon. It has long been marked with a break from the everyday monotony. All women are invited to join the Rosh Chodesh group monthly for a little learning, a little nosh, and some pleasant conversation. We always have an interesting topic to discuss. No preparation, RSVP, or commitment needed. Just join us when you can for a nice evening visiting with old friends and meeting new ones.

The Rosh Chodesh Group will be facilitated by Gloria Hernandez and will meet on the **2nd Thursday of the month**. Topics will be announced in all Synagogue publications.

**ROSH HODESH GROUP**

**First Session: Nov.10th at 8 pm**

## EDUCATION SERIES

(continued)

## SHABBAT SERVICES



### The Great Debate Society

Jewish Values Discussion Group  
Last Wednesday of the month at 8 pm

The Great Debate Society is a delightful evening of thoughtful discussion and personal perspective on a variety of topics with a view to the Jewish values inherent in the theme. Join the Rabbi and others for lively discussions on varied topics of interest to Jews! Meetings are the **last Wednesday of the month at 8 pm.** October through May in the Social Hall.

#### Dates

Oct. 26  
Rabbi Pivo

***A Time to Die***  
***Does Judaism Permit Assisted Suicide?***

Nov. 30  
Bonnie Sender  
***Magen Tzedek***

Jan. 25  
Orin Rotman  
***For God's Sake***  
***San Francisco's Attempt to Ban Circumcision***

Feb. 29  
Norm Kurtz

Apr. 25  
TBD

May 30  
Marc Herwitz  
***Terror Networks***  
***How did they Develop and Gain Strength in the US***

### SHABBAT...A GIFT TO YOURSELF

The experience of Shabbat is an experience of and for a lifetime. It is a gift you will give yourself and one which you will want to share.

#### FRIDAY NIGHT SERVICES

Our Friday evening service, which includes Kabbalat Shabbat and Maariv, begins at 7:30 pm. Responsive English readings are incorporated as part of the Friday night service. This service usually is less than an hour in length.

#### TOT SHABBAT SERVICES

Join us in welcoming Shabbat with other families who have young children in a relaxed, fun and child-friendly atmosphere. Three times a year we hold an extended *Pray and Play Tot Shabbat* experience that includes dinner, family service, and Shabbat fun.

Tot Shabbat takes place on the **FIRST FRIDAY OF EACH MONTH** at 6:30 pm in the Beit Midrash. This 30-minute Tot Shabbat session is run by Mrs. Debbie Frager, who is also a Beth Judea congregant. The group will then enjoy their own Oneg Shabbat.

#### SHABBAT MORNING SERVICES

In our main sanctuary, Shabbat morning services begin at 9:30 A.M. and last about 2 hours.

#### GAN SHABBAT

*GAN SHABBAT* offers a participatory Shabbat Service for families with children, ages 9 and under. Our service is filled with singing, stories and learning. We meet every Shabbat morning in the Beit Midrash on the Religious School level. Our service begins at 10:30 AM and concludes around 11:30 AM. After *Gan Shabbat* all families are encouraged to join the main service and the community Kiddush.

#### INTERPRETIVE SHABBAT SERVICE

Join us on the 1st and 3rd Shabbat of each month at 10:30 am, as Norm Kurtz facilitates this Shabbat morning service. We will examine the structure of the prayer service, learning the major prayers and becoming more comfortable with the choreography and customs of the Shabbat morning service.











PLEASE  
PLACE  
STAMP  
HERE

5304 RFD  
Rte. 83 & Hilltop Rd.  
Long Grove, IL 60047  
Phone: 847-634-0777  
Fax: 847-634-8055  
E-mail: [bethjudea@bethjudea.org](mailto:bethjudea@bethjudea.org)  
[www.bethjudea.org](http://www.bethjudea.org)

CONGREGATION  
BETH JUDEA

2011-2012  
PROGRAM GUIDE